

# Municipal Building Area by decade

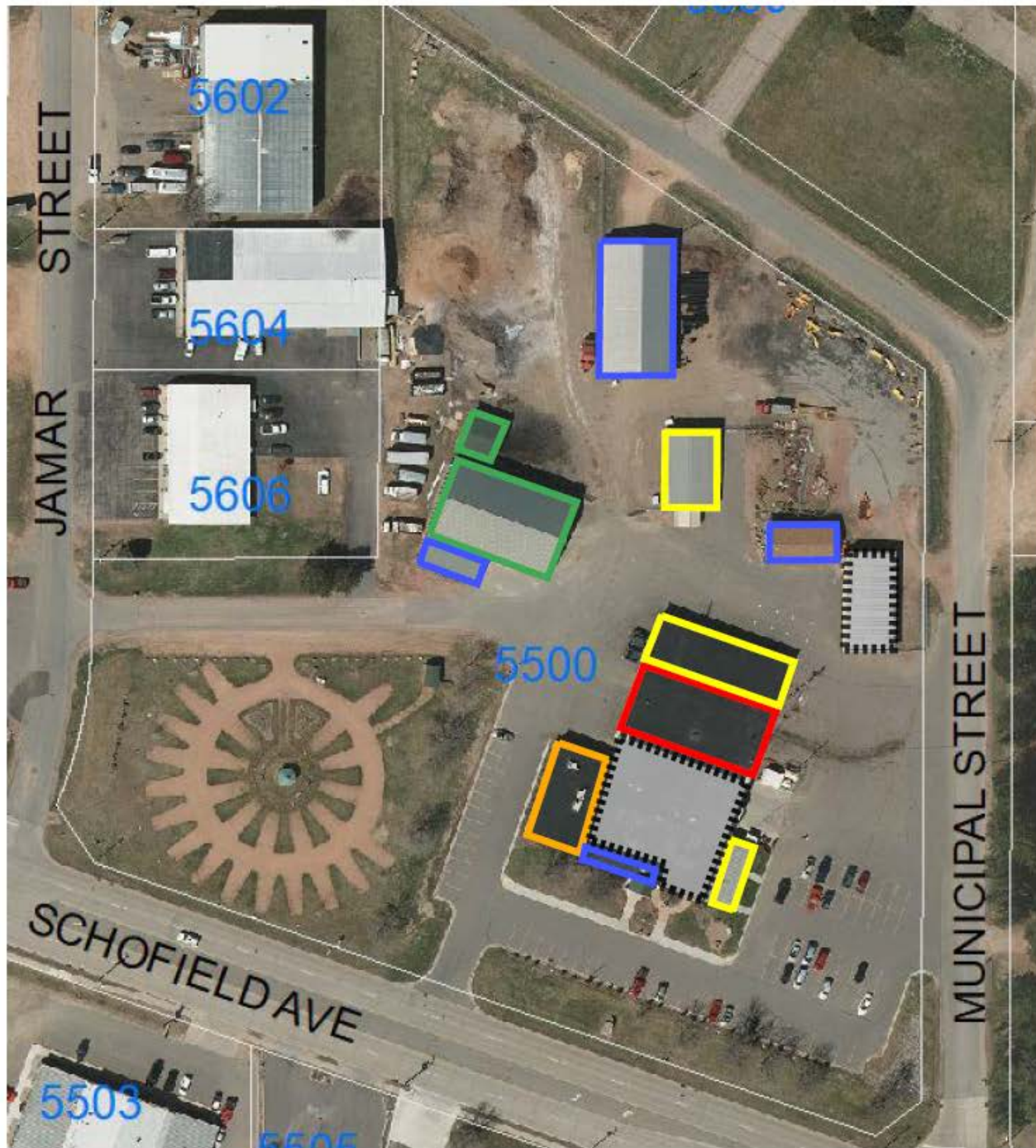
Building Stage	Increase in Building Area (SF)	Total Building Area (SF)	% Addition Area Increase	% Area Increase over Original
Original Building		8,700		
1960's Addition	5,640	14,340	65%	65%
1970's Addition	3,000	17,340	21%	199%
1980's Addition	7,115	24,455	41%	281%
1990's Addition*	0	24,455	0	281%
2000's Addition**	7,715	32,170	32%	370%
2010's Addition				

## Notes:

\* 1990's Additions were the salt shed and cold mix shed, these are not included above as they are strictly used for material storage

\*\* The Building at Ryan St was added in the 2000's and has an area of 5,600 SF, this would bring total Building SF to 37,770 which is a 434% increase over the original building size.

2015



- Original 1956 Buildings
- 1960's Additions
- 1970's Additions
- 1980's Additions
- 1990's Additions
- 2000's Additions
- 2010's Additions